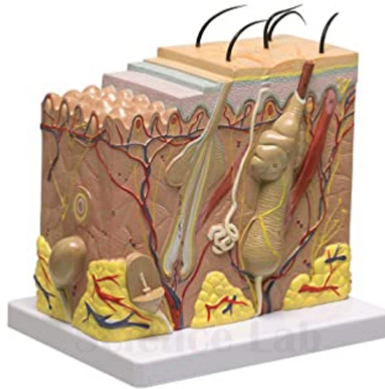


Product Name :

Enlarged Skin Model

Product Code :

SLE/A/19



Description :

Laminated key included.

Mounted on blue base.

Size: 20 x 22.5 x 15.5 cm.

A variety of sensory receptors are shown, as well as the structure of a hair follicle.

Layers of the skin can be seen as a cross section and as cutaways at the top of the model.

The stratum lucidum is also included to represent thick skin.

Contact Science Lab for your Educational School Science Lab Equipments. We are best scientific laboratory equipments manufacturer, scientific laboratory equipments supplier, technical educational equipment exporter, technical educational equipment manufacturer, technical educational equipment supplier, technical educational equipments exporter.