



Email : [sales@scilabexport.com](mailto:sales@scilabexport.com)

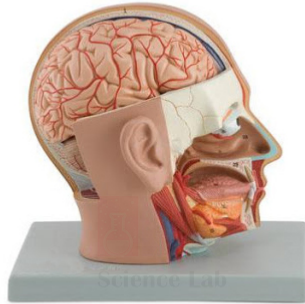
Phone: +91-7082934803

**Product Name :**

Human Head Dissection Model

**Product Code :**

SLE/A/127



## Description :

About life size.

Mounted on a durable plastic base.

Size (without base), 21 × 21 × 18 cm.

Right cerebral hemisphere and right cerebellar lobe are removable.

All significant structures are numbered and referenced on the accompanying key.

Removable right eye is complete with extrinsic muscles, lacrimal gland, lacrimal duct, and optic nerve.

Contact Science Lab for your Educational School Science Lab Equipments. We are best geography lab equipments manufacturers, geography lab equipments suppliers, geography lab models suppliers, high school biology lab equipment india, high school biology lab equipment manufacturers, high school chemistry lab equipment manufacturers.